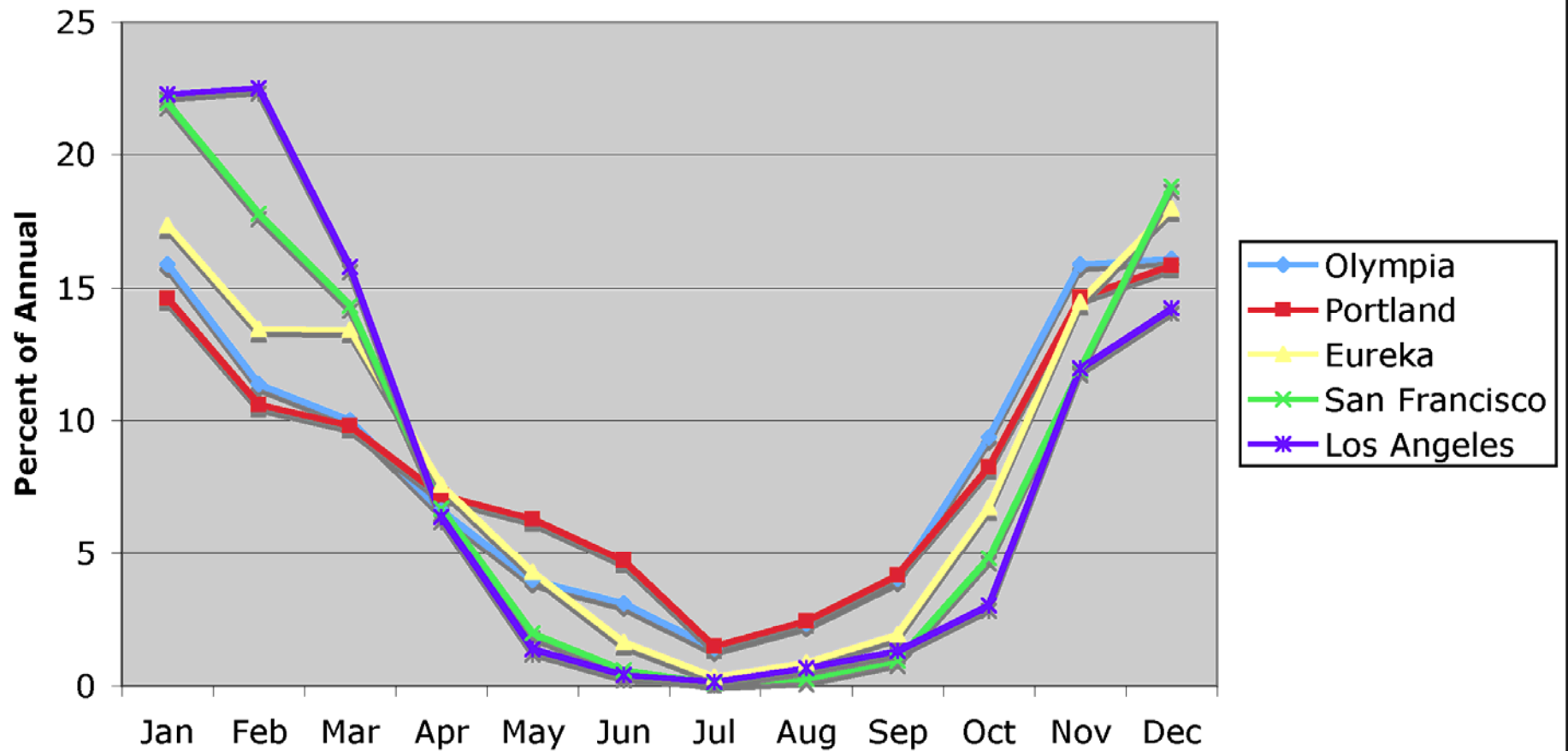


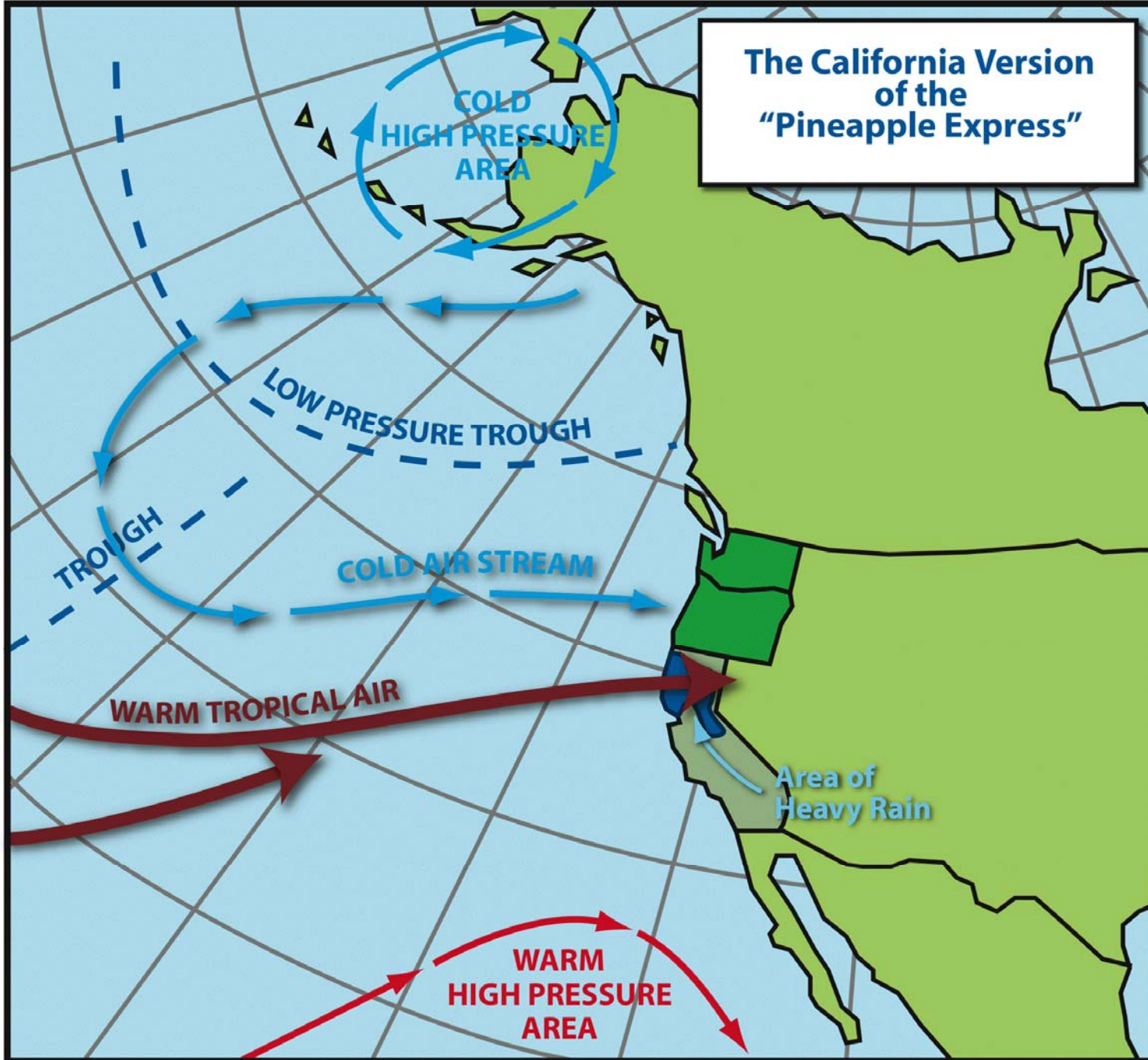
**An Analysis of Storm Characteristics and
Long-Term Storm Variability Along the
Oregon-Washington Coast**

**George H. Taylor
Certified Consulting Meteorologist
Applied Climate Services, LLC**

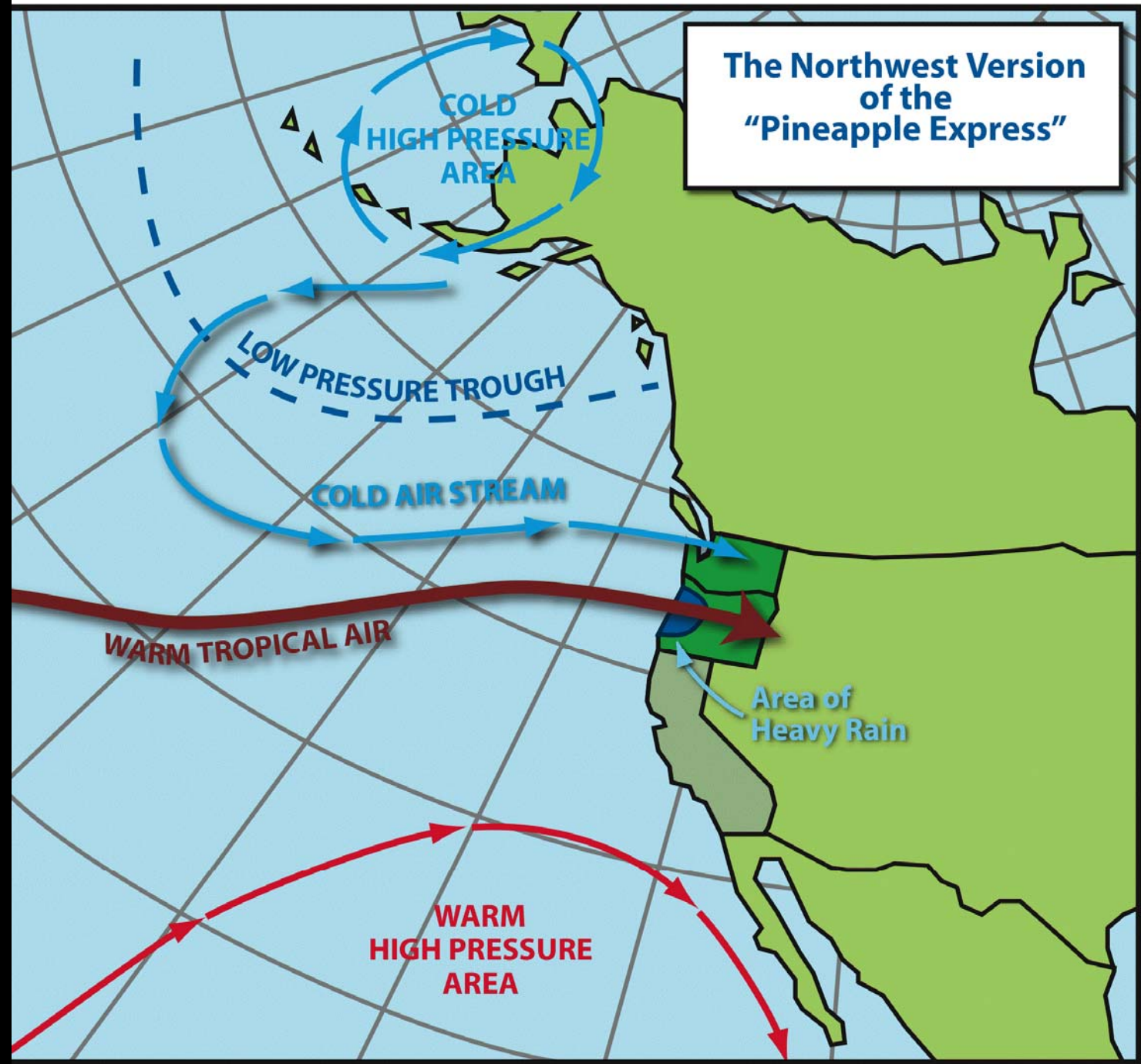
**Percentage of Average Annual Precipitation Recorded Each Month,
West Coast Stations**



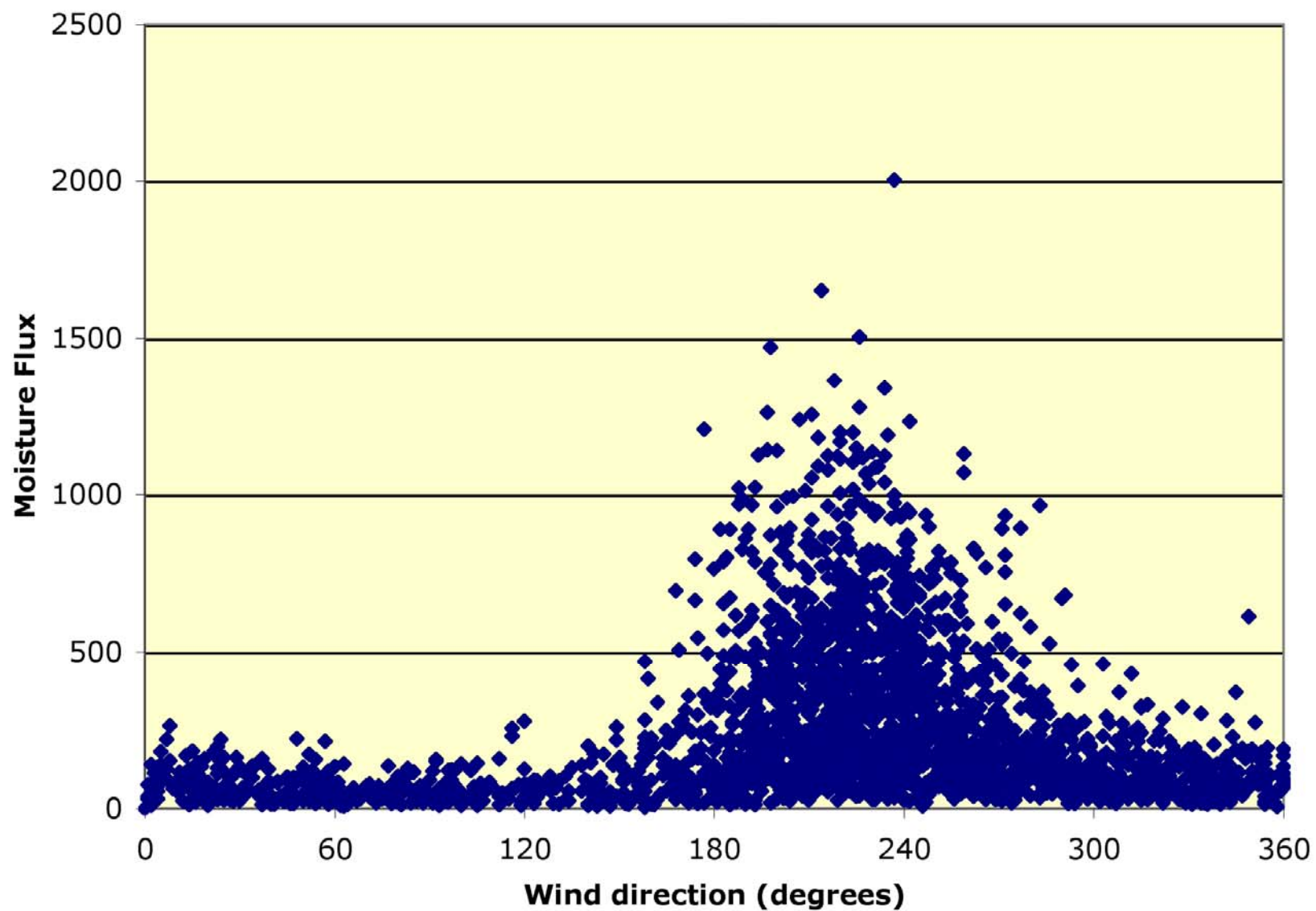
The California Version
of the
"Pineapple Express"



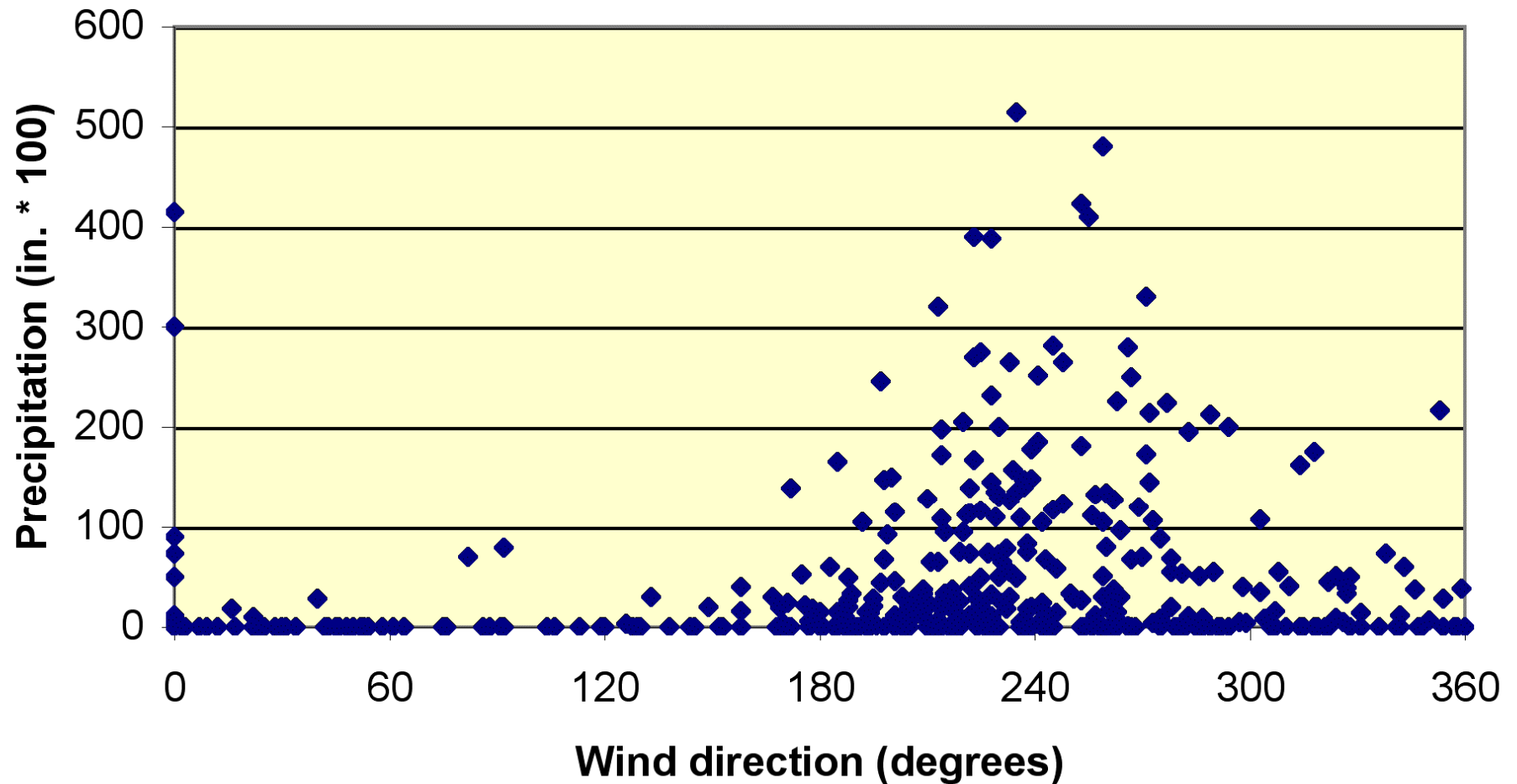
**The Northwest Version
of the
"Pineapple Express"**



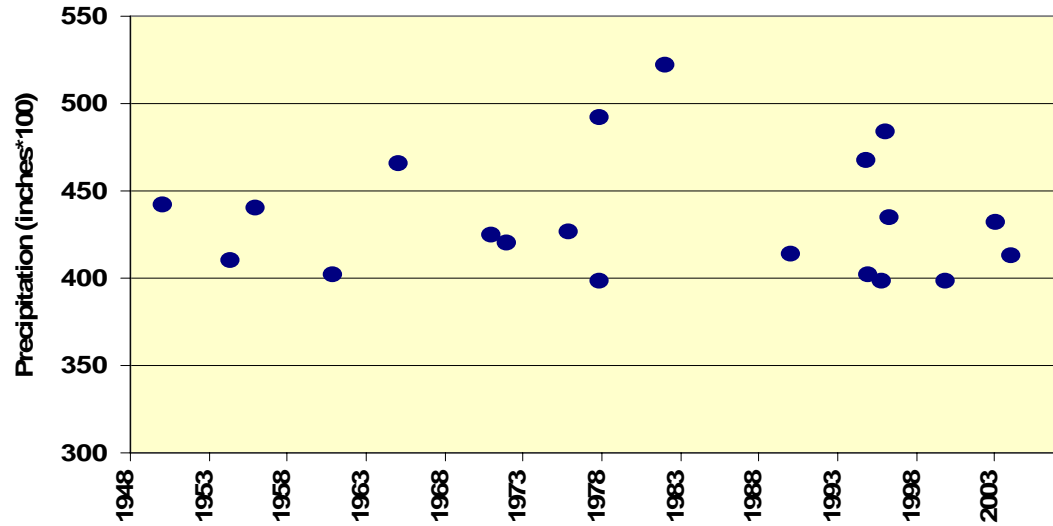
Salem 850 mb Wind Direction vs. Moisture Flux, January 1956-96



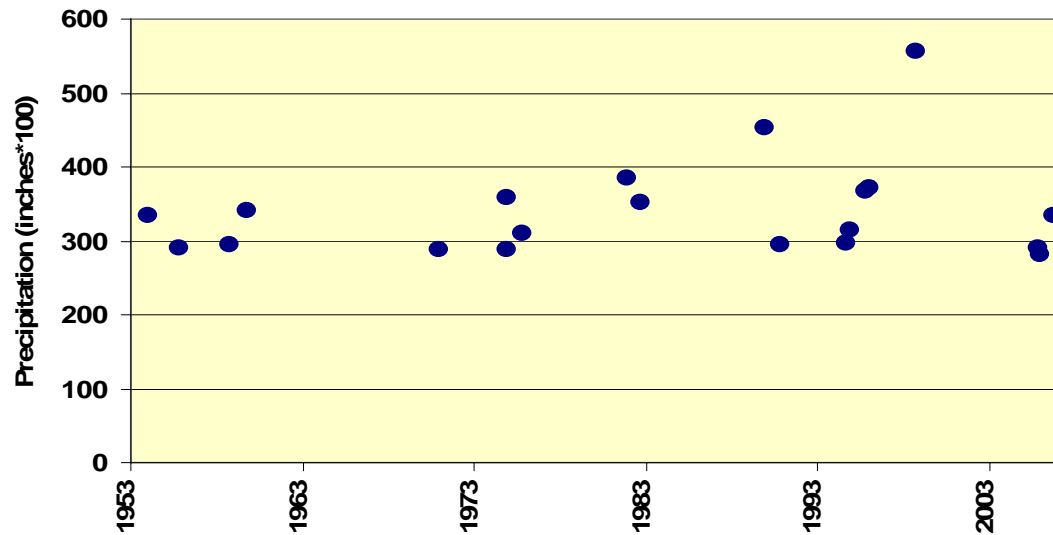
Laurel Mtn Precip vs Salem 850 mb WD, January



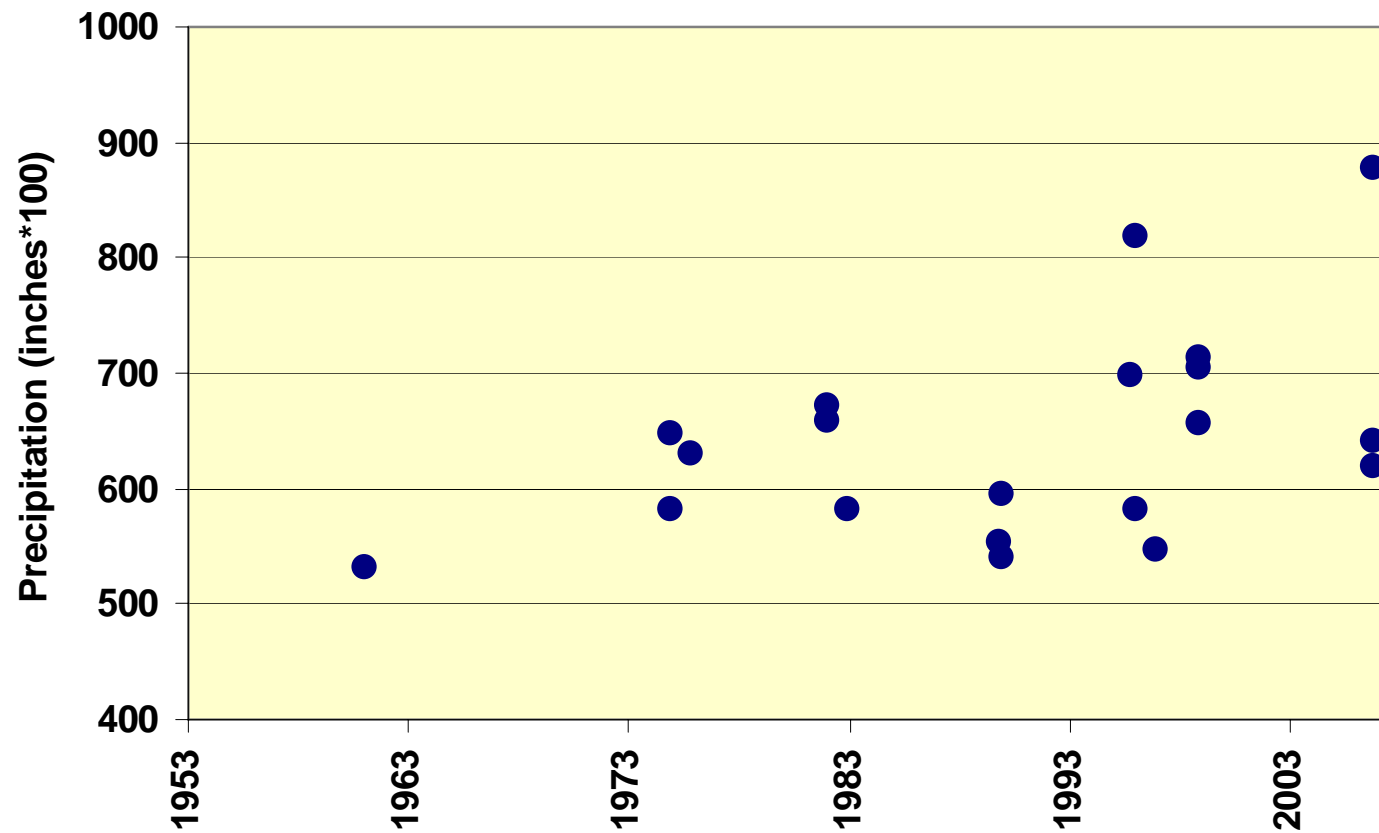
Highest 1-Day Precipitation, Tillamook, OR



Highest 1-Day Precipitation, Astoria, OR



Highest 3-Day Precipitation, Astoria, OR



Salem Soundings with Precipitable Water Content of 20 mm or more, 1966-1996

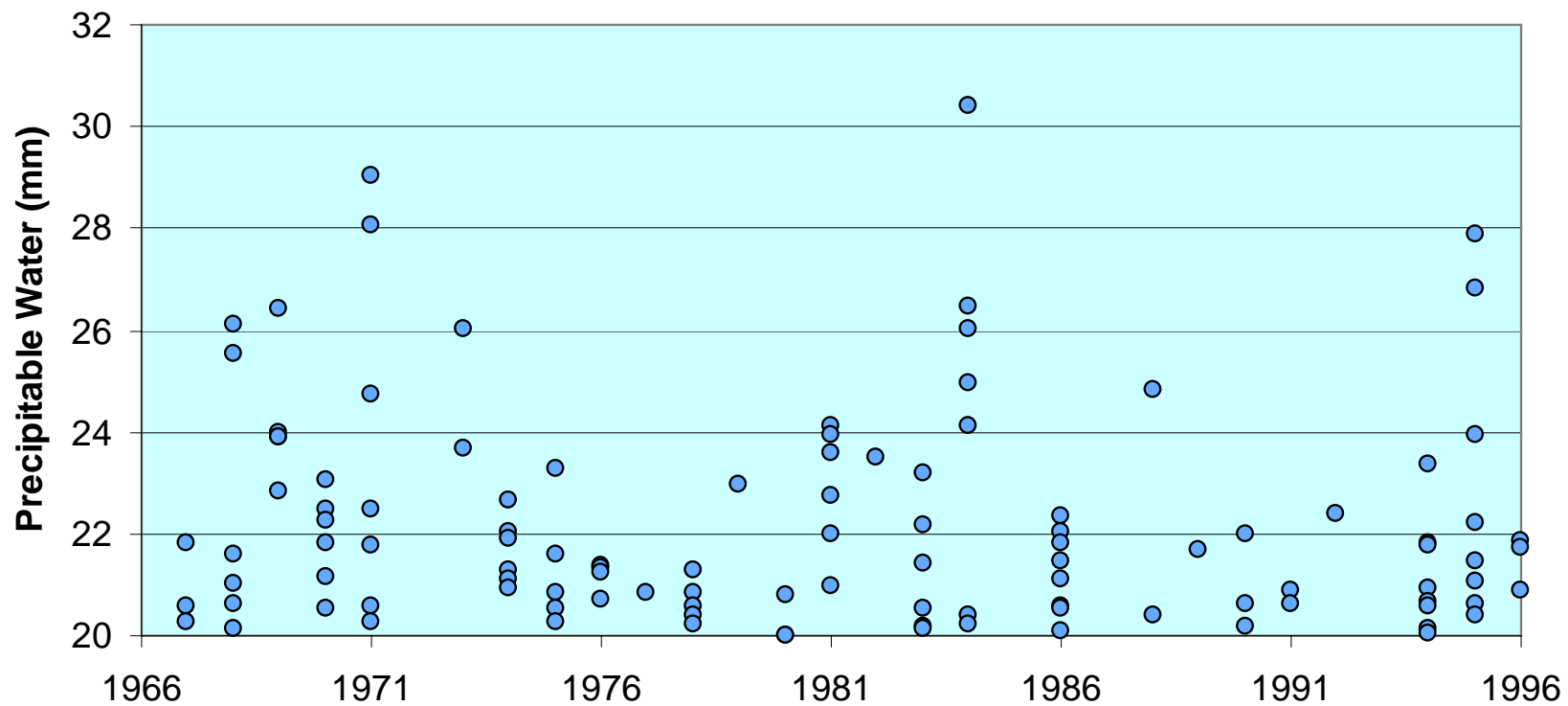
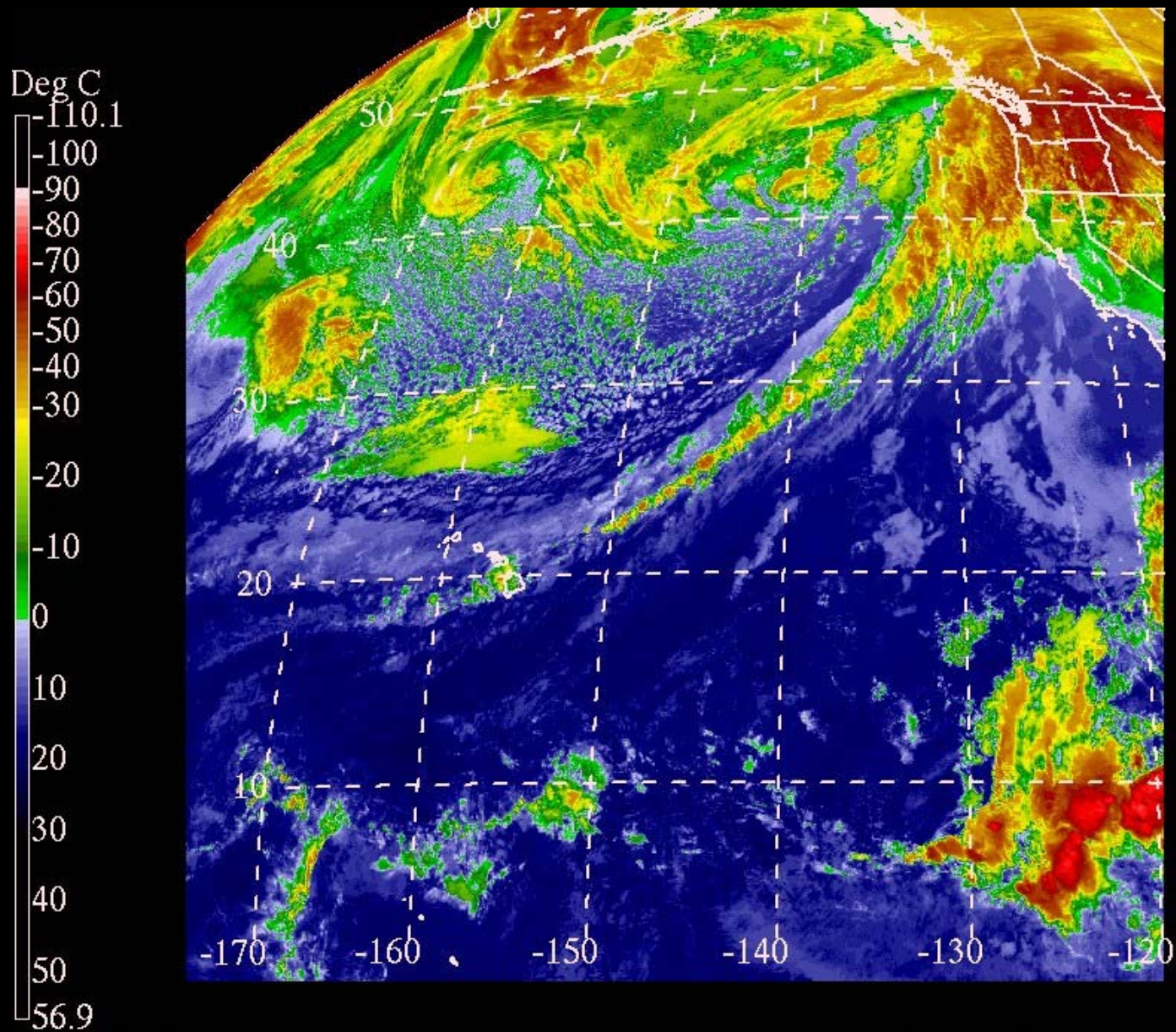


Table 5.1. Historic Peak Winds at Astoria. Peak gusts from 1995-2006 are adjusted upward to account for a 5-second averaging period.

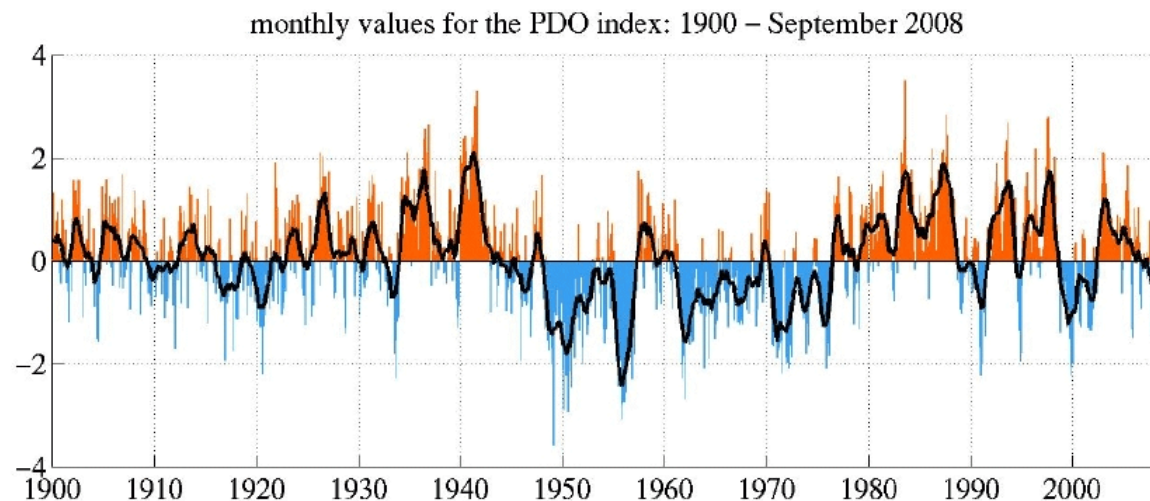
Storm Event	Peak Gust at Astoria (mph)	Other Name
12-Oct-62	96	Columbus Day Storm
03-Dec-07	85	"Great Coastal Gale"?
14-Dec-06	82	Hanukkah Eve Storm
15-Jan-51	80	
16-Jan-00	78	
03-Mar-99	78	
13-Feb-79	76	Kitsap Blowdown
17-Dec-61	76	
20-Dec-61	76	
16-Jan-86	75	
03-Nov-58	75	
15-Dec-95	74	Big Blast
15-Dec-97	74	
20-Jan-93	72	Inauguration Day Storm
27-Apr-62	71	
27-Dec-02	70	
26-Mar-71	70	
09-Jan-53	70	
14-Nov-81	68	Friday-the-13th Storm
07-Jan-53	66	
27-Oct-50	65	



goeswest IR 02:00 am HST Mon 03 Dec 2007 (1200 UTC Mon 03 Dec 2007)

Research Topics

1. Time series of “Atmospheric Rivers” (“Pineapple Express events”)
2. Concurrent wind-rain storms
3. Using PDO and other “cycles” to hedge risk of extreme events



Diagnosis of an Intense Atmospheric River Impacting the Pacific Northwest: Storm Summary and Offshore Vertical Structure Observed with COSMIC Satellite Retrievals

PAUL J. NEIMAN, F. MARTIN RALPH, AND GARY A. WICK

NOAA/Earth System Research Laboratory/Physical Sciences Division, Boulder, Colorado;

YING-HWA KUO, TAE-KWON WEE, AND ZAIZHONG MA, National Center for Atmospheric Research;

GEORGE H. TAYLOR, Oregon Climate Service, Oregon State University, Corvallis, Oregon

MICHAEL D. DETTINGER, U.S. Geological Survey, Scripps Institution of Oceanography, La Jolla, California

